

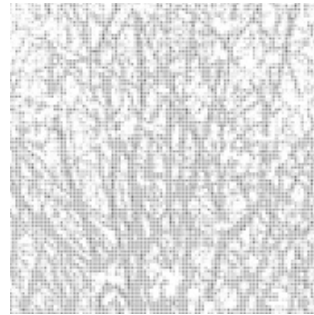
**Data for new surfaces.
Patterns and graphics**

**for punching, milling,
laser cutting, waterjet cutting
and printing**

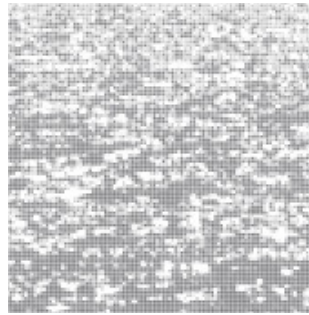
Overview 1/6

Photographic motifs

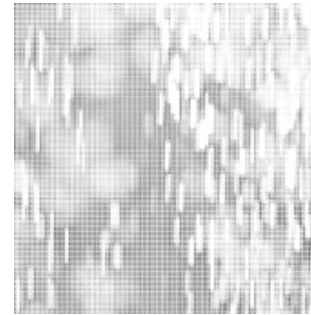
for milling,
some motifs for punching,
laser cutting, waterjet cutting,
printing



[24.036.1](#)



[24.035.1](#)



[24.034.1](#)



[24.033.1](#)



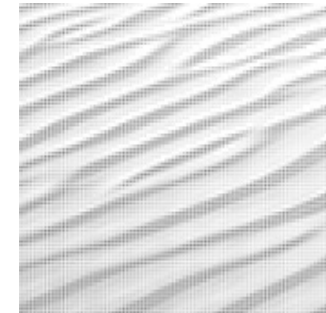
[24.032.1](#)



[24.085.1](#)



[24.084.1](#)



[24.083.1](#)



[24.082.1](#)



[24.081.1](#)

Custom motifs available on request.

Visit the website for overall views
and format variants.

Depending on the media, a raster image can display with
moiré images or interference lines on the monitor.

Please print this page for an A4 optimized view.

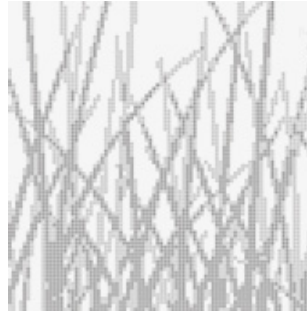
Overview 2/6

Photographic motifs

with 2 hole sizes
especially suitable for punching,
also suitable for milling,
laser cutting, waterjet cutting,
printing



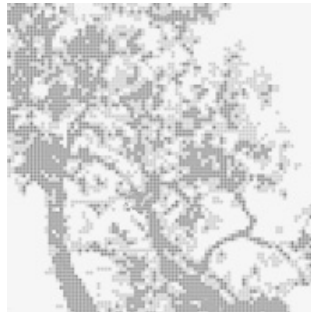
[24.164.1](#)



[24.163.1](#)



[24.162.1](#)



[24.161.1](#)



[24.160.1](#)

Custom motifs available on request.

Visit the website for overall views
and format variants.

Depending on the media, a raster image can display with
moiré images or interference lines on the monitor.

Overview 3/6

Graphic motifs and patterns

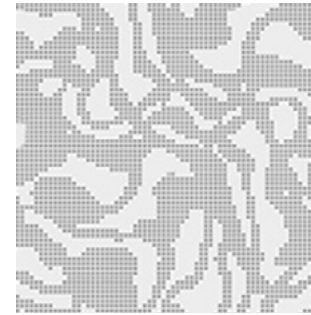
for milling, punching,
laser cutting, waterjet cutting,
printing



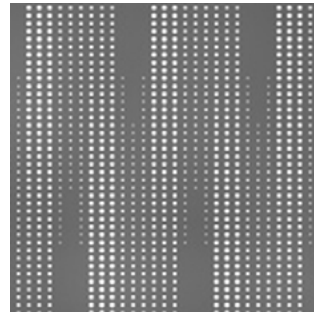
[14.119.1](#)



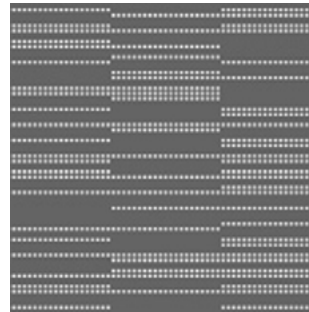
[14.118.1](#)



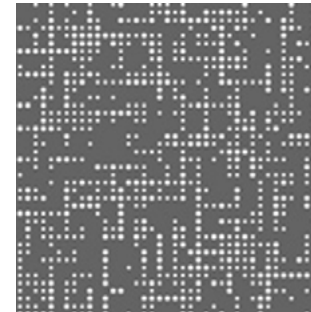
[14.117.1](#)



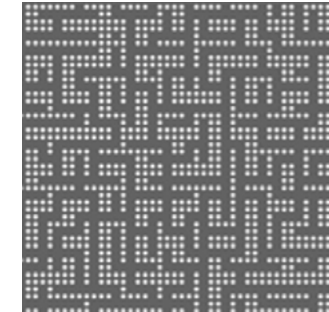
[04.115.1](#)



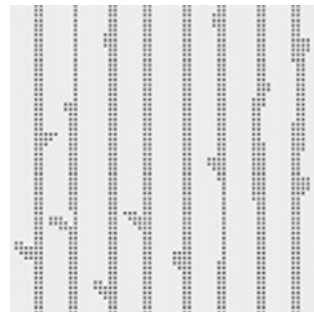
[04.114.1](#)



[04.111.1](#)



[04.112.1](#)



[04.110.1](#)



[04.106.2](#)

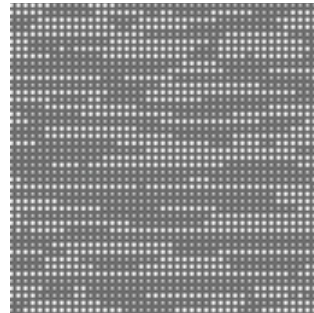
Visit the website for overall views
and format variants.

Depending on the media, a raster image can display with
moiré images or interference lines on the monitor.

Overview 4/6

Graphic motifs and patterns

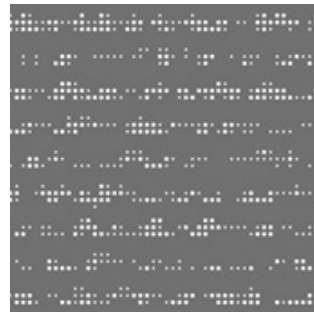
with 1 or 2 hole sizes
especially suitable for punching,
also suitable for milling,
laser cutting, waterjet cutting,
printing



[14.159.1](#)



[14.159.1-1](#)



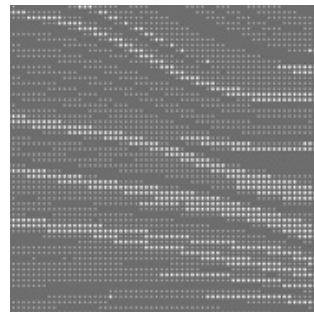
[14.158.1](#)



[14.157.1](#)



[14.156.1](#)



[14.155.1](#)

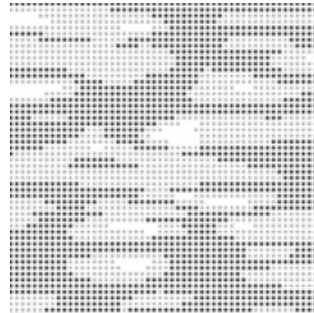
Visit the website for overall views
and format variants.

Depending on the media, a raster image can display with
moiré images or interference lines on the monitor.

Overview 4.1/6

Graphic patterns

with 1 or 2 hole sizes
especially suitable for punching,
also suitable for milling,
laser cutting, waterjet cutting,
printing



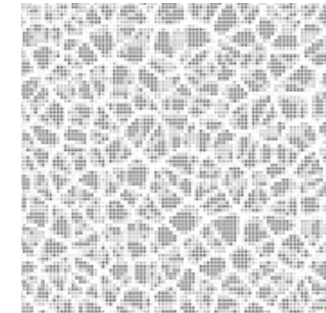
[04.221.1](#)



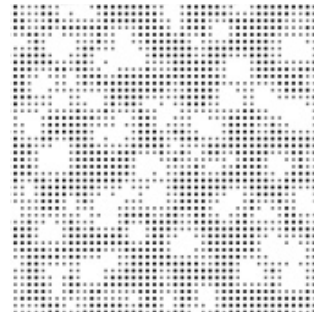
[04.222.1](#)



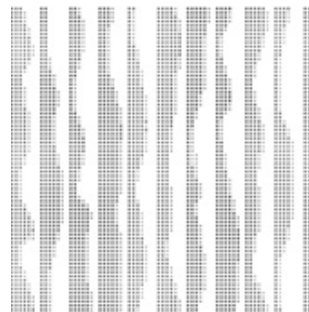
[04.223.1](#)



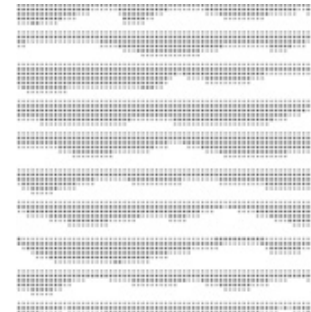
[04.224.1](#)



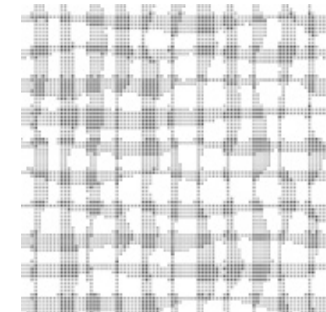
[04.225.1](#)



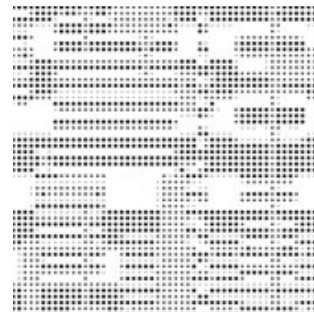
[04.226.1](#)



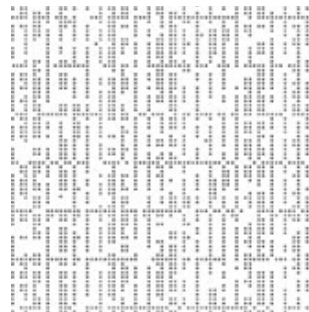
[04.227.1](#)



[04.228.1](#)



[04.229.1](#)



[04.230.1](#)

Visit the website for overall views
and format variants.

Depending on the media, a raster image can display with
moiré images or interference lines on the monitor.

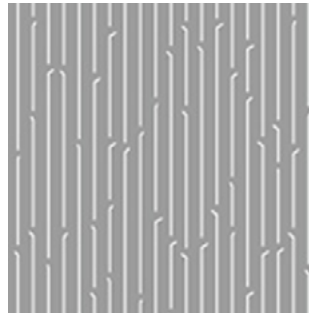
Overview 5/6

Patterns

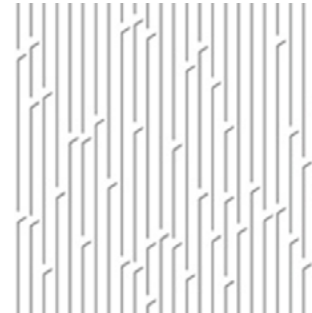
for milling,
laser cutting, waterjet cutting,
(some not suitable for perforation)
printing



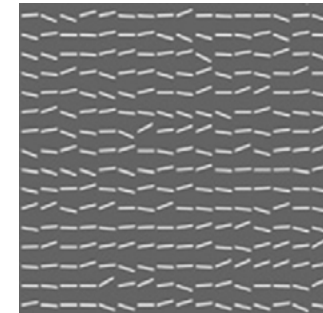
[04.014.2](#)



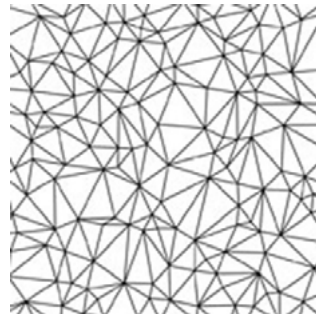
[04.080.1](#)



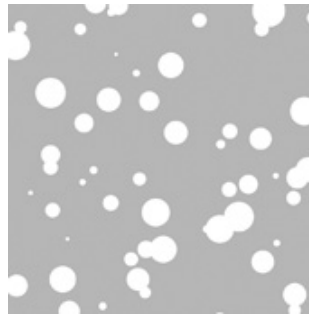
[04.079.1](#)



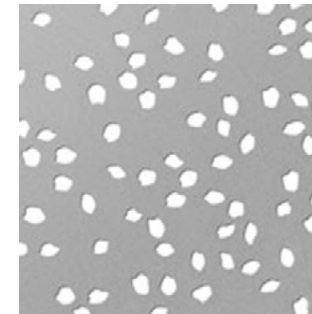
[04.116.1](#)



[14.022.2](#)



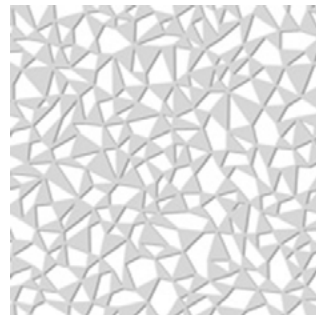
[04.005.1](#)



[04.109.1](#)

Patterns

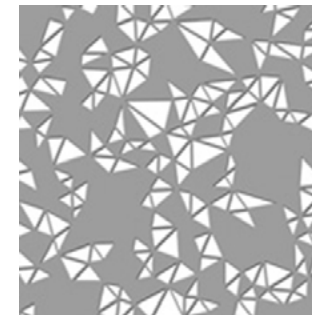
for cutting, waterjet cutting,
printing



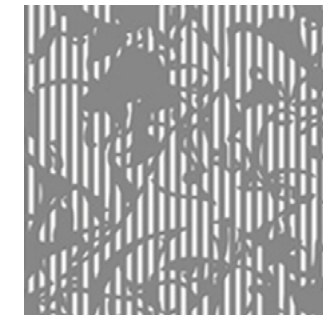
[04.108.1](#)



[04.107.1](#)



[04.107.2](#)



[04.106.1](#)

Visit the website for overall views
and format variants.

Depending on the media, a raster image can display with
moiré images or interference lines on the monitor.

Please print this page for an A4 optimized view.

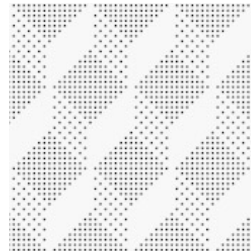
Patterns _ Special Series

for punching, milling,
laser cutting, waterjet cutting

Series 1



[04.120.1](#)



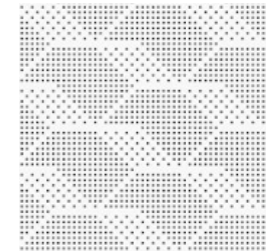
[04.120.2](#)



[04.120.3](#)

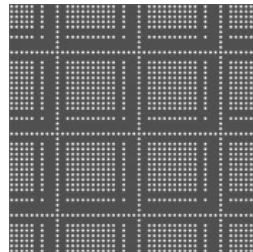


[04.120.4](#)

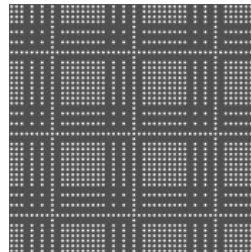


[04.120.5](#)

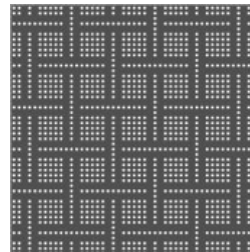
Series 2



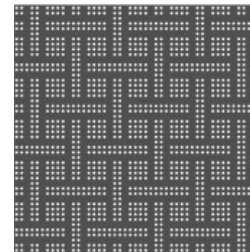
[04.121.1](#)



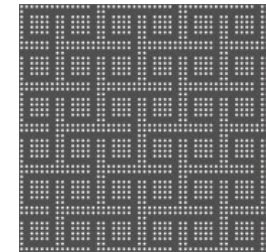
[04.121.2](#)



[04.121.3](#)

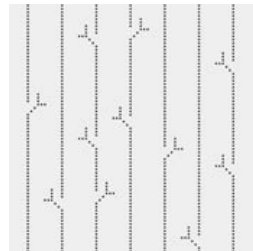


[04.121.4](#)

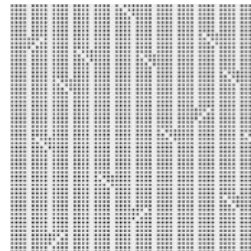


[04.121.5](#)

Series 3



[04.123.1](#)

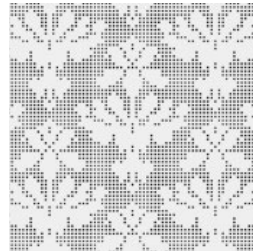


[04.123.2](#)

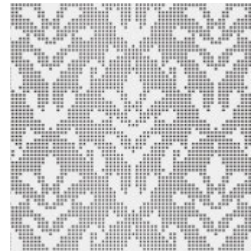


[04.123.3](#)

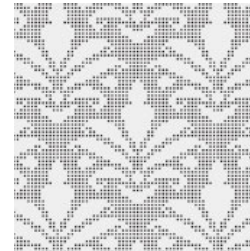
Series 4



[04.125.1](#)



[04.125.2](#)



[04.125.3](#)

Visit the website for overall views
and format variants.

Special !

This motifs in the
Special Series can be used
multiple times and there
is no limitation in terms
of square meters.

Package prices and all information:
[Hole patterns Special PDF >](#)

Depending on the media, a raster image can display with
moiré images or interference lines on the monitor.

Please print this page for an A4 optimized view.

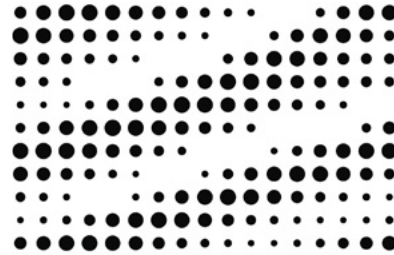
Sheet milling 1/2

Particularly suited are all data with
1 to 5 uniform hole/slot sizes
in whole millimeters
from ø 3 mm to 12 mm

With more machine runtime
intermediate sizes, such as in this
example, also can be achieved.

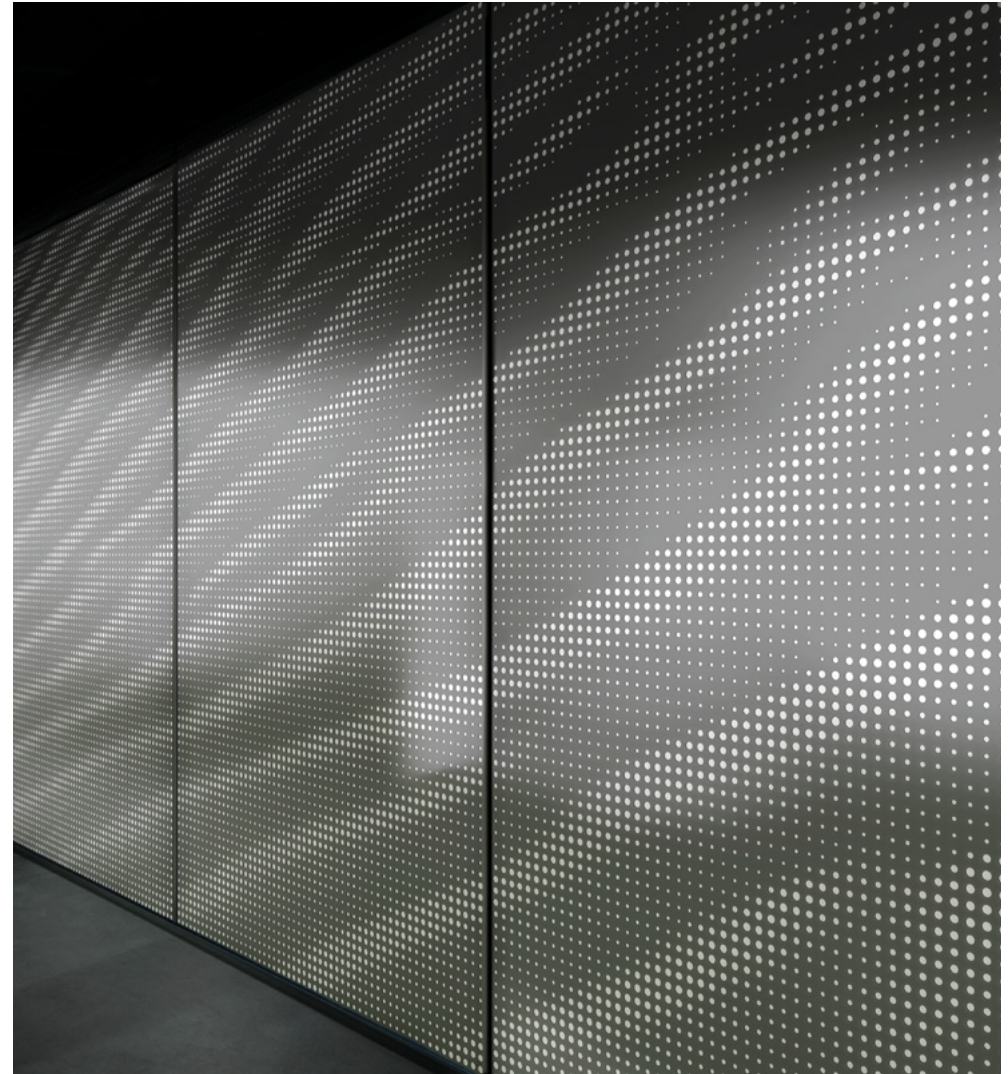
This process are particularly suited for
photo-based perforated sheet motifs.

Supplied file formats:
dxf or dwg



Detail

The sizes and intervals are adjusted to
conform to sheet size as well as material
thickness and characteristics.



Motif [24.083.1](#) milled aluminum sheet, backlit

Sheet milling 2/2

Particularly suited are all data with
1 to 5 uniform hole/slot sizes
in whole millimeters
from ø 3 mm to 12 mm

With more machine runtime
intermediate sizes also can be achieved.

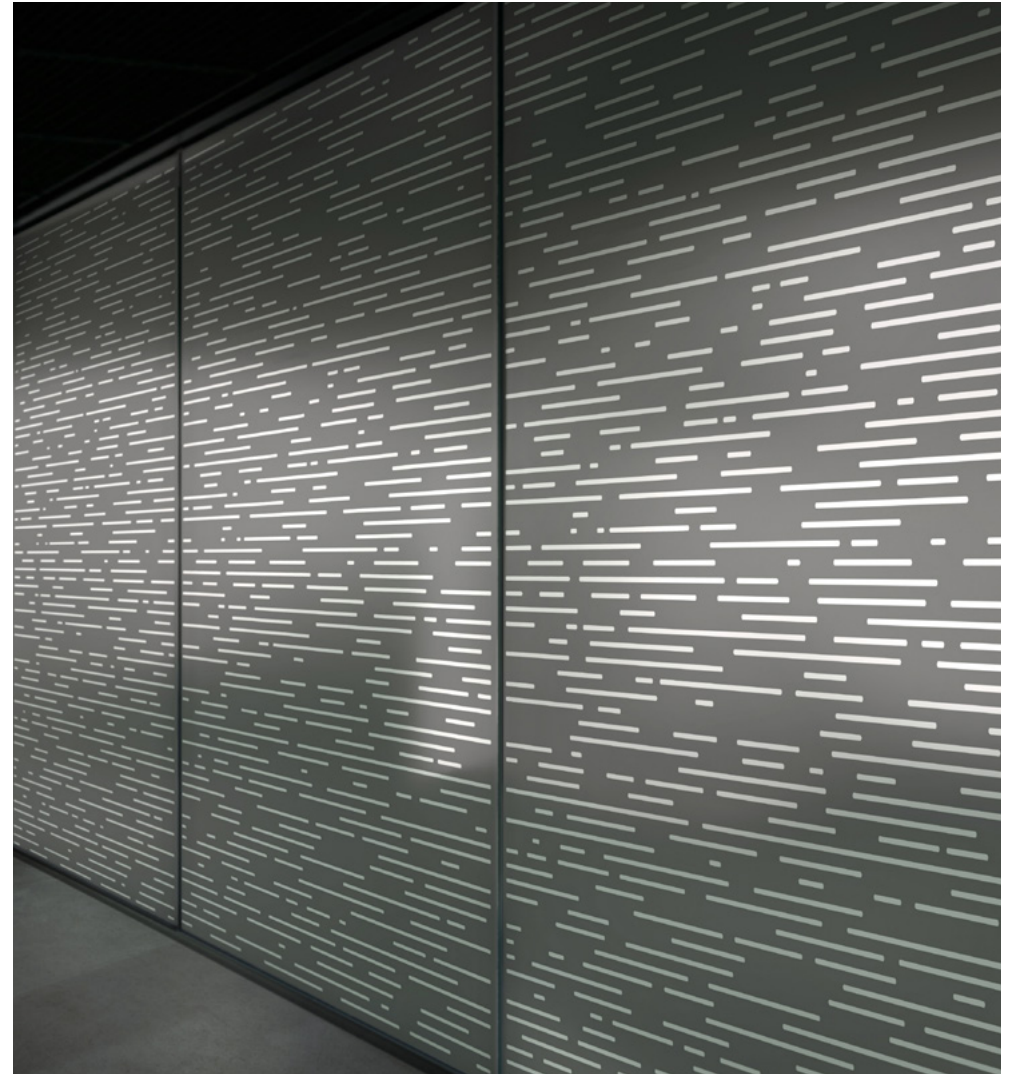
Some materials also allow for
relief milling.

Supplied file formats:
dxf or dwg



Detail

The sizes and intervals are adjusted to
conform to sheet size as well as material
thickness and characteristics.



Motif [04.014.2](#) milled aluminum sheet, backlit

Metal sheet punching 1/2

Punching with square perforations.

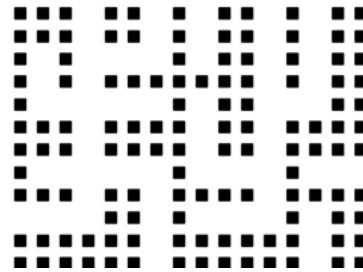
Particularly suited are all data with uniformly elements.

For hole sizes 2 mm and larger.
Sizes depend on manufacturer's tool stock.

Variations with clearly visible rounded or beveled corners are also possible.

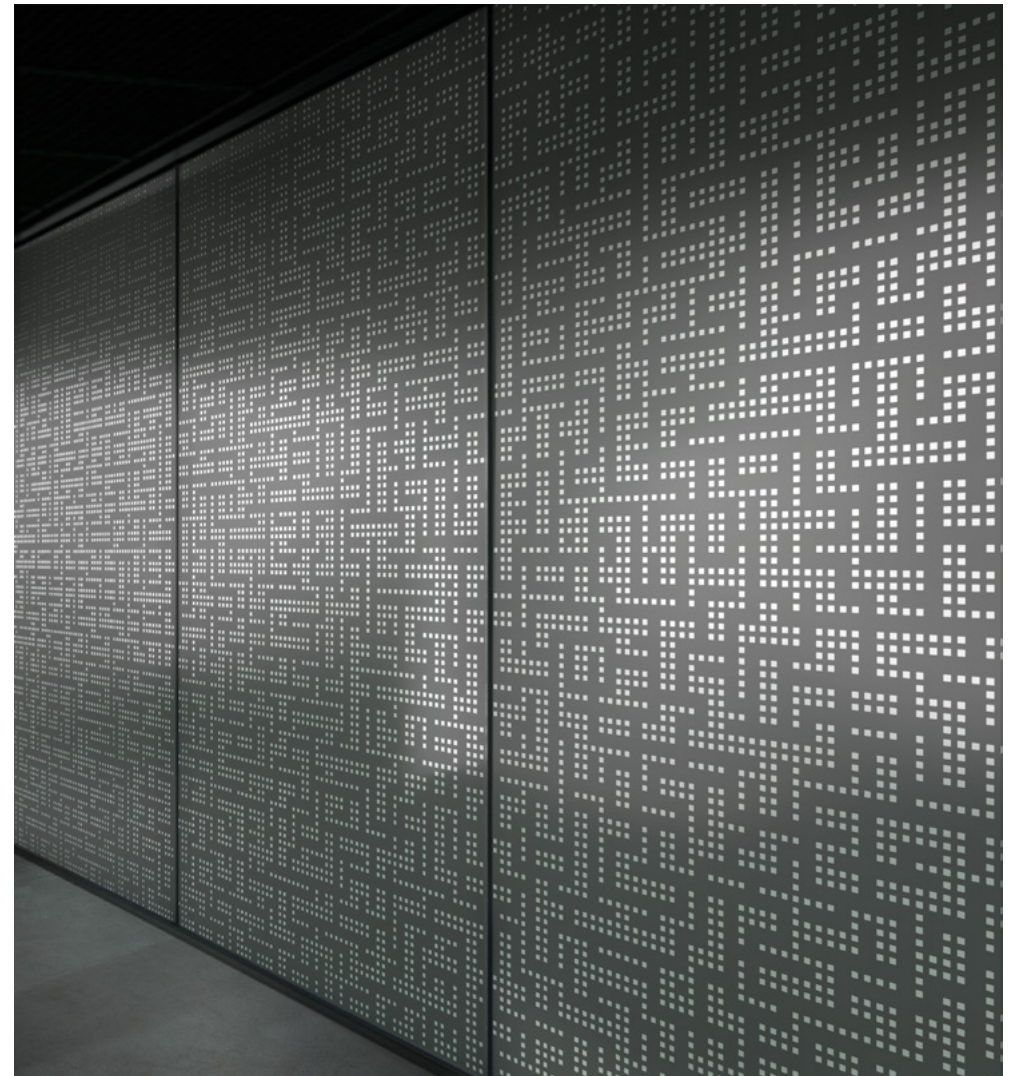
Punching is a reasonably priced procedure.

Supplied file formats:
dxf or dwg



Detail

The sizes and intervals are adjusted to conform to sheet size as well as material thickness and characteristics.



Motif [04.112.1](#) punched aluminum sheet, backlit

Metal sheets punching 2/2

Punching with round perforations.

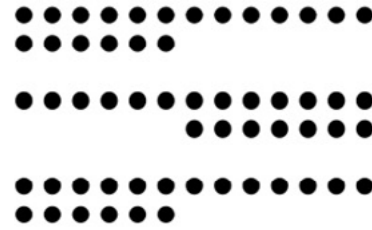
Particularly suited are all data with hole sizes with 1 to 8 perforations \varnothing 1 mm and larger.

Possible sizes depend on the manufacturer's tool stock.

For physical reasons, the perforation diameter must be greater than sheet thickness.

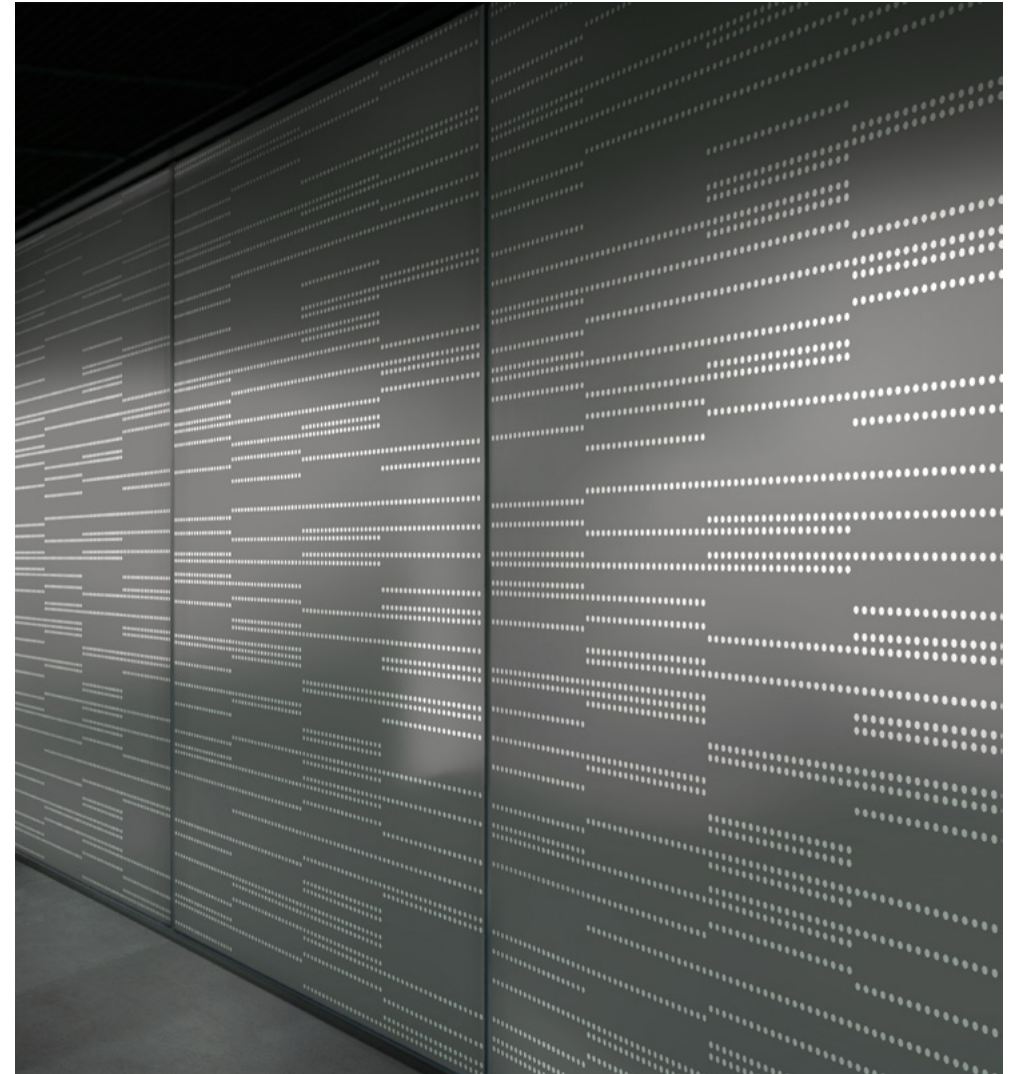
Punching is a reasonably priced procedure.

Supplied file formats:
dxf or dwg



Detail

The sizes and intervals are adjusted to conform to sheet size as well as material thickness and characteristics.



Motif [04.114.1](#) punched aluminum sheet, backlit

sheets laser cutting / waterjet cutting 1/1

Laser and waterjet cutting techniques are used to achieve forms with acute angles or cut-outs that do not depend on the shape of the tool.

Waterjet cutting is suited for thick materials or special requirements on the cut edge.

Laser cutting allows for the cutting of very small holes as well as right-angled inner edges. It is particularly suited for thin sheets up to 4 mm in thickness.

Supplied file formats:
dxf or dwg



Detail

The sizes and intervals are adjusted to conform to sheet size as well as material thickness and characteristics.



Motif [04.106.1](#) aluminum sheet, waterjet cut, backlit

Printing on various materials

All motifs are suited for:

- Digital print wallpapers
- Large-format printing
- Silk-screen printing
- Textile printing
- Direct panel printing
- Film printing
- Direct glass printing

Motif coloration according to customer specifications.

Supplied file formats:
Tiff on a scale of 1:1, 190 dpi

Color mode:
cmyk or s/w

The sizes and intervals are adjusted to conform to producible strip widths or sheet sizes.



Motif [24.035.1](#) printed on high-quality, nonwoven wallpaper

**Ready-to-use data
for your individual projects.**

We implement your projects together with experience manufacturers. These manufacturers are well acquainted with ornament.control's motifs. All recommendations („particularly suited for“) were coordinated together with the relevant manufacturer.

The company contact persons are happy to offer their competent and comprehensive advice concerning individual manufacturing techniques and the applicable materials.
Of course we are happy to deliver all data to other professional manufacturers.

Most of the motifs are generative graphics based on our own programmed code. This allows us to adjust the dot size and intervals with manageable effort to conform to your design wishes as well as material thickness and characteristics.

We would be happy to send you high resolution files for presentations free of charge.

On request we can supply visualizations with general and detail views.

We and our recommended manufacturers would be happy to assist you. We are looking forward to your projects.

Kathrin Kreitmeyer
Design and Management

info@ornament-control.de